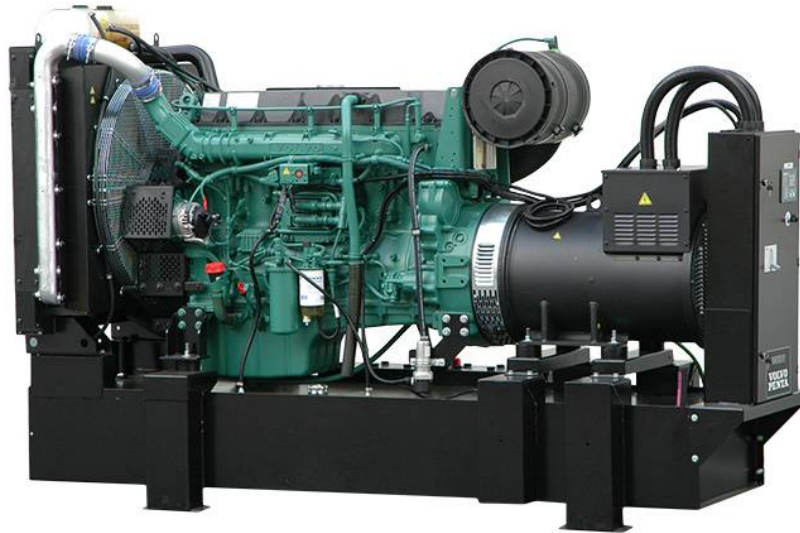


**MAIN FEATURES**

Highest quality and reliability. ComAp IL-NT AMF25 controller. Ready to control MAINS – GENERATOR transfer switch. Configured for both manual and automatic mode (MRS + AMF).	Wide range of standard and optional equipment. Engine heater – ready to load just after start. Frame anticorrosion coating – Zr. Brushless alternator.
Wide range of remote communications options. Schneider NSX type GCB.	



The presented image is for illustration purpose only.

**GENERAL DATA**

Code	F.0300.VA.F
Standby power E.S.P. [kVA] / [kW]	330,0 / 264,0
Prime power P.R.P. [kVA] / [kW]	300,0 / 240,0
Prime current P.R.P [A]	433,0
Frequency [Hz]	50
Voltage [V]	400
Exhaust emission	stage II
Fuel type	Diesel (EN 590)
Fuel consumption - 50% load [l/h]	32,8
- 75% load [l/h]	46,7
- 100% load [l/h]	60,4
- 110% load [l/h]	66,3
Standard fuel tank capacity [l]	700
Autonomy with 100% load [h]	11,5
Engine control voltage [V]	24
Weight without fuel [kg]	~2780
Dimensions L x W x H [mm]	3020 x 1147 x 1980
Acoustic power Lwa [dBA]	120,4 ± 0,7
Acoustic pressure Lpa (7m) [dBA]	91,1 ± 0,7

**Nominal power P.R.P:**

Prime power available in variable load application in accordance with ISO 8528, 10% overload capacity is available for a period of 1h within a 12-hour period of operation. Average power consumption should not exceed 70% PRP for each 24 hours of work.

**Stand-by power E.S.P.:**

Emergency standby power rating is applicable for supplying emergency power for the duration of a utility power interruption. No overload allowed, limited to 500h of operation per year, average power consumption should not exceed 80% ESP for each 24 hour

**Remark:**

All parameters are given for reference conditions: ambient air temperature up to 40°C and site altitude above sea level 1000m.

**Norms and directives:**

- Machinery directive 2006/42/EC
- Low voltage directive 2014/35/EC
- EC directive 2014/30/EC
- Emission directive 97/68/EC
- ISO 8528-1:2005, ISO 8528-5:2013
- ISO 8528-13:2016
- EN 60204-1

**STANDARD CONTROLLER**

Controller type: AMF 25
Easy to operate, intuitive graphical interface
Real time clock with battery supply
AMF function available
Flexible event based history with up to 119 events
3 Phase generator current measurement
Generator and Mains phase voltage measurement
Active/reactive power measurement
Active and reactive energy counter
Running hours counter
Battery charging alternator circuit connection
Fuel level measurement
Generator protection (over/under frequency, voltage, overcurrent)
Communication with ECU supporting CAN J1939 standard
Communication interface RS 485 and RS 232 supporting Modbus RTU (IL-NT RS232-485 module required)
GSM modem / wireless internet (IL-NT GPRS module required)
Internet/Ethernet communication (IB-Lite module required)
InteliMonitor software for single gen-set view
WebSupervisor software for Android mobile devices or PC's for fleet management
Active SMS or e-mail (IL-NT GPRS or IB-Lite module required)


**ENGINE**

Brand	Volvo
Type	TAD1341GE
Made in	Sweden
Engine power [kW]	275,0
Emission standard*	stage II
Rotation per minute [rpm]	1500
Engine governor	electronic
Governor class**	G3
Displacement [l]	12,8
No of cylinder	6
Fuel system	unit injectors
Electrical system [V]	24
Cooling system capacity [l]	44,0
Oil pan capacity [l]	36,0
Fuel type	Diesel (EN 590)

**ALTERNATOR**

Nominal Voltage [V]	400
Nominal power factor (cos phi)	0,8
Ambient temperature, altitude	40 °C, 1000m a.m.s.l
Nominal Power [kVA]	300,0
IP protection	IP 23
No of bearing	single bearing
Coupling	direct
Technology	brushless
Short circuit maintaining capacity	270% 10s
Efficiency [%]	92,3
Insulation class	H
Total harmonic content THD [%]	2,5
Reactance Xd'' [%]	11,8
Voltage regulator type	DVR, digital
Voltage measurement	3 phases
Voltage accuracy [%]	+/- 0,25
AVR supply system	auxiliary winding
AVR supply optional	PMG
Made in	EU

\* According directive 97/68/EC non road mobile machinery engine emission.

\*\* According ISO 8528-5:2013



# FOGO FOCUSED ON GENERATORS ONLY

## Power Generator FDF 300 V

### STANDARD EQUIPMENT

Volvo TAD1341GE engine	✓
Electronic engine speed governor	✓
Oil low pressure switch	✓
Oil pressure sensor	✓
Engine high temperature switch	✓
Engine high temperature sensor	✓
Engine preheating with thermostat	✓
Engine oil Titan Cargo 15W40	✓
Oil draining hand pump	✓
Fuel filter with water separator	✓
Coolant Fuchs Maintain Fricofin LL-35	✓
Starting batteries 2x 180 Ah	✓
Battery charger	✓
GCB Schneider NSX 630 3P + Mic.2.3	✓
GCB shunt release coil	✓
Controller ComAp IL-NT-AMF25	✓
Controller switch	✓
Acoustic alarm	✓
Emergency stop button	✓
Welded frame with fuel tank	✓
Frame with drip tray	✓
Fuel level measurement	✓
Exhaust compensator	✓
Engine and alternator vibro isolators	✓
Silencer delivered with the generator	✓
Transportation brackets	✓

### OPTIONAL EQUIPMENT

Battery disconnection switch	✓
GCB 4P Schneider NSX Micrologic 2.3	✓
Power Lock type power output	✓
Power socket box	✓
Transfer switch controlled by generator controller	✓
Transfer switch with ATS controller	✓
GPRS communication card	✓
Ethernet card	✓
RS 485, RS 232 card	✓
Remote display	✓
Non-standard fuel tank size	✓
External fuel tank 1 000 – 10 000 l	✓
3-way valve for external fuel tank connection	✓
Fuel tank filling pump and shut-off valve	✓

**INSTALLATION GUIDELINES**

Power terminal	GCB terminal
Recommended cable for up to 30m power cable way	Flexible 2x5x95 mm <sup>2</sup>
Recommended cable for do 30m generator heater supply	Flexible 3x2,5 mm <sup>2</sup>

\*For additional cable connection with FOGO ATS see ATS wiring diagram

Exhaust pipe min diameter (max. 7 m, 4 bends)	101,6 mm
Exhaust pipe min diameter (max. 15 m, 4 bends)	133 mm

**MAINTENANCE GUIDELINES**

Fuel filters replacement	500 h / 1 year
Oil replacement	After first 100h, then every 500 h / 1 year
Oil filters replacement	After first 100h, then every 500 h / 1 year
Coolant replacement	1000 h / 2 years
Battery replacement	2 years
Electrical installation supervising	According to local requirements, at least once per year

**WARRANTY**

Continuous work generators	12 months up to 1000 working hours
----------------------------	------------------------------------