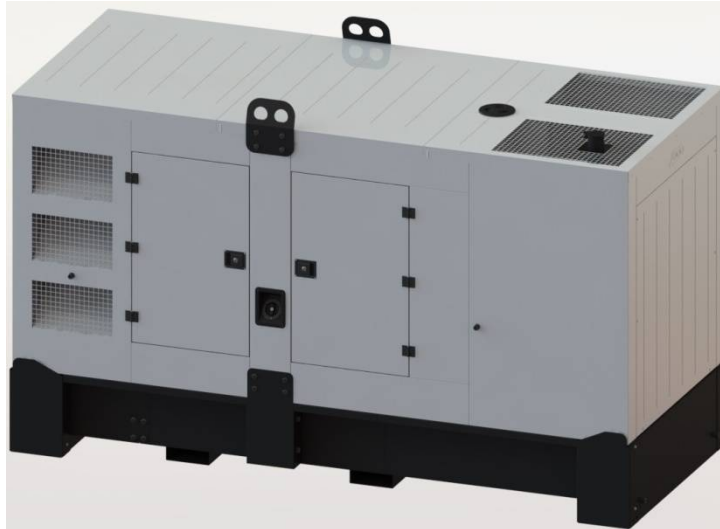


**MAIN FEATURES**

Highest quality and reliability. ComAp IL-NT AMF25 controller.	Wide range of standard and optional equipment. Engine heater – ready to load just after start.
Ready to control MAINS – GENERATOR transfer switch. Configured for both manual and automatic mode (MRS + AMF).	Drip tray, Anticorrosion coating: frame - Zr, canopy – Zr, Al-Zn.
Wide range of remote communications options. Schneider NSX type GCB.	Brushless alternator.



The presented image is for illustration purpose only.

**GENERAL DATA**

Code	F.0135.I3A.G
Standby power E.S.P. [kVA] / [kW]	144,0 / 115,0
Prime power P.R.P. [kVA] / [kW]	131,0 / 105,0
Prime current P.R.P [A]	189,0
Frequency [Hz]	50
Voltage [V]	400
Exhaust emission	stage IIIa
Fuel type	Diesel (EN 590)
Fuel consumption - 50% load [l/h]	16,6
- 75% load [l/h]	23,6
- 100% load [l/h]	30,5
- 110% load [l/h]	33,3
Standard fuel tank capacity [l]	350
Autonomy with 100% load [h]	11,5
Engine control voltage [V]	12
Weight without fuel [kg]	~2070
Dimensions L x W x H [mm]	3650 x 1520 x 2080
Guaranteed noise power Lwa [dBA]	~96
Acoustic pressure Lpa (7m) [dBA]	~65

**Nominal power P.R.P.:**

Prime power available in variable load application in accordance with ISO 8528, A 10% overload capacity is available for a period of 1 hour within a 12h period of operation. Average power consumption should not exceed 80% PRP for each 24h of operation.

**Stand-by power E.S.P.:**

Emergency standby power rating is applicable for supplying emergency power for the duration of a utility power interruption. No overload allowed, limited to 200h of operation per year, max average power consumption 70% of ESP.

**Remark:**

All parameters are given for reference conditions: ambient air temperature up to 40 C and site altitude above sea level 1000m

**Norms and directives:**

- Machinery directive 2006/42/EC
- Low voltage directive 2014/35/EC
- EC directive 2014/30/EC
- Noise directive 2000/14/EC
- Emission directive 97/68/EC
- ISO 8528-1:2005, ISO 8528-5:2013
- ISO 8528-13:2016
- EN 60204-1

**STANDARD CONTROLLER**

Controller type: AMF 25
Easy to operate, intuitive graphical interface
Real time clock with battery supply
AMF function available
Flexible event based history with up to 119 events
3 Phase generator current measurement
Generator and Mains phase voltage measurement
Active/reactive power measurement
Active and reactive energy counter
Running hours counter
Battery charging alternator circuit connection
Fuel level measurement
Generator protection (over/under frequency, voltage, overcurrent)
Communication with ECU supporting CAN J1939 standard
Communication interface RS 485 and RS 232 supporting Modbus RTU (IL-NT RS232-485 module required)
GSM modem / wireless internet (IL-NT GPRS module required)
Internet/Ethernet communication (IB-Lite module required)
InteliMonitor software for single gen-set view
WebSupervisor software for Android mobile devices or PC's for fleet management
Active SMS or e-mail (IL-NT GPRS or IB-Lite module required)


**ENGINE**

Brand	FPT (Iveco)
Type	NEF67TM1F
Made in	Italy
Engine power [kW]	113,5
Emission standard*	stage IIIa
Rotation per minute [rpm]	1500
Engine governor	mechanical
Governor class**	G2
Displacement [l]	6,7
No of cylinder	6
Fuel system	direct injection
Electrical system [V]	12
Cooling system capacity [l]	25,5
Oil pan capacity [l]	17,2
Fuel type	Diesel (EN 590)

**ALTERNATOR**

Nominal Voltage [V]	400
Nominal power factor (cos phi)	0,8
Ambient temperature, altitude	40 °C, 1000m a.m.s.l
Nominal Power [kVA]	135,0
IP protection	IP 23
No of bearing	single bearing
Coupling	direct
Technology	brushless
Short circuit maintaining capacity	270% 10s
Efficiency [%]	92,1
Insulation class	H
Total harmonic content THD [%]	<2
Reactance Xd'' [%]	10,1
Voltage regulator type	DVR, digital
Voltage measurement	3 phases
Voltage accuracy [%]	+/- 0,25
AVR supply system	auxiliary winding
AVR supply optional	PMG
Made in	EU

\* According directive 97/68/EC non road mobile machinery engine emission.  
 \*\* According ISO 8528-5:2013



# FOGO FOCUSED ON GENERATORS ONLY

## Power Generator FDG 135 I3 draft

### STANDARD EQUIPMENT

FPT (Iveco) NEF67TM1F engine	✓
Oil low pressure switch	✓
Engine high temperature switch	✓
Engine preheating with thermostat	✓
Engine oil Titan Cargo 15W40	✓
Fuel filter with water separator	✓
Coolant Fuchs Maintain Fricofin LL-35	✓
Coolant inlet outside of the canopy	✓
Starting batteries 100 Ah	✓
Battery charger	✓
GCB Schneider NSX 250 3P + Mic.2.2	✓
GCB shunt release coil	✓
Controller ComAp IL-NT-AMF25	✓
Controller switch	✓
Acoustic alarm	✓
Emergency stop button	✓
Silenced canopy made with Al.-Zn.	✓
Standard color RAL 7032	✓
Fuel tank integrated with a frame with drip tray	✓
Welded frame with fuel tank	✓
Fuel inlet outside of the canopy with lock	✓
Fuel level measurement	✓
Exhaust compensator and silencer	✓
Engine and alternator vibro isolators	✓
Transportation brackets	✓

### OPTIONAL EQUIPMENT

Electronic engine speed governor	✓
Oil pressure sensor	✓
Engine temperature sensor	✓
Oil draining hand pump	✓
Battery disconnection switch	✓
GCB 4P Schneider NSX Micrologic 2.2	✓
Power Lock type power output	✓
Power socket box	✓
Transfer switch controlled by generator controller	✓
Transfer switch with ATS controller	✓
GPRS communication card	✓
Ethernet card	✓
RS 485, RS 232 card	✓
Remote display	✓
Drip space level sensor	✓
Fuel and retention pump	✓
Non-standard fuel tank size	✓
External fuel tank 1 000 – 10 000 l	✓
3-way valve for external fuel tank connection	✓
Fuel tank filling pump and shut-off valve	✓
Non-standard canopy color (RAL palette)	✓
Trailer with straight drawbar	✓

**INSTALLATION GUIDELINES**

Power terminal	GCB terminal
Recommended cable for up to 30m power cable way	Flexible 5x70 mm <sup>2</sup>
Recommended cable for do 30m generator heater supply	Flexible 3x2,5 mm <sup>2</sup>

\*For additional cable connection with FOGO ATS see ATS wiring diagram

Exhaust pipe min diameter (max. 7 m, 4 bends)	101,6 mm
Exhaust pipe min diameter (max. 15 m, 4 bends)	114,3 mm

**MAINTENANCE GUIDELINES**

Fuel filters replacement	500 h / 1 year
Oil replacement	After first 100h, then every 500 h / 1 year
Oil filters replacement	After first 100h, then every 500 h / 1 year
Coolant replacement	1000 h / 2 years
Battery replacement	2 years
Electrical installation supervising	According to local requirements, at least once per year

**WARRANTY**

Continuous work generators	12 months up to 1000 working hours
----------------------------	------------------------------------